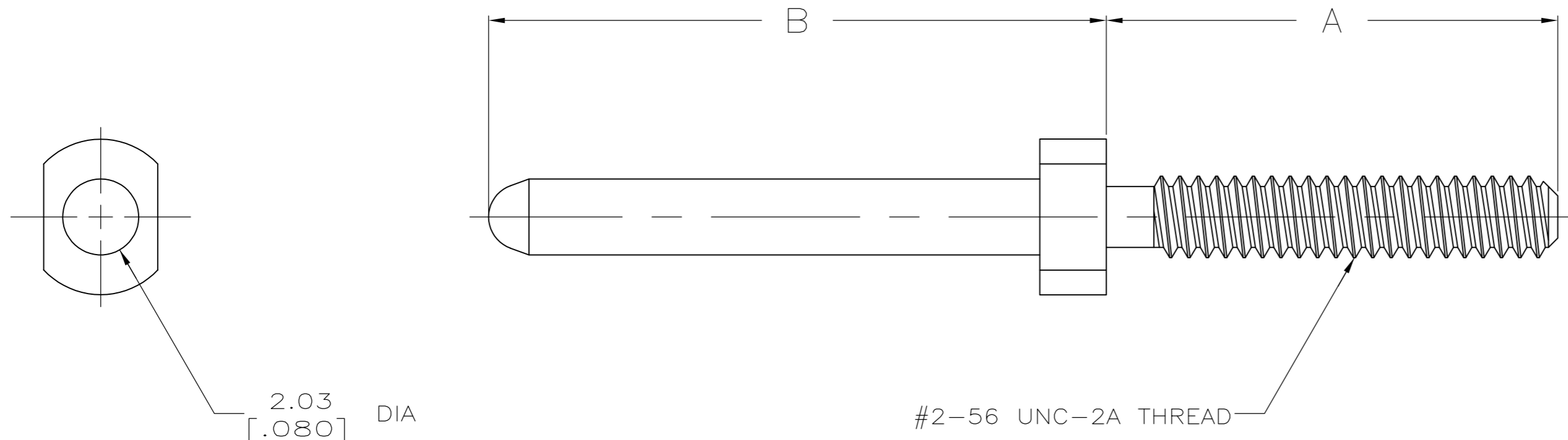


THIS DRAWING IS UNPUBLISHED. RELEASED FOR PUBLICATION  
 © COPYRIGHT - By - ALL RIGHTS RESERVED.

LOC	DIST	REVISIONS			
P	LTR	DESCRIPTION	DATE	DWN	APVD
AD	00				
	D3	ECO-14-006324 & RTS 953794.1	29APR2014	BC	AS



	16.51 [.650]	6.73 [.265]	1-532807-1
	16.51 [.650]	4.57 [.180]	1-532807-0
	16.51 [.650]	25.40 [1.000]	532807-6
3	16.51 [.650]	9.40 [.370]	532807-5
	16.51 [.650]	15.49 [.610]	532807-4
	16.51 [.650]	19.05 [.750]	532807-3
3	16.51 [.650]	14.27 [.562]	532807-2
	16.51 [.650]	12.06 [.475]	532807-1
	B	A	PART NUMBER

- 1 MATERIAL: STAINLESS STEEL
- 2 FINISH: PASSIVATED
- 3 OBSOLETE PARTS: OBSOLETE CIS STREAMLINING PER D.RENAUD/D.SINISI

THIS DRAWING IS A CONTROLLED DOCUMENT.		DWN R.K. SEIFRIED 05/30/90	TE Connectivity	
DIMENSIONS: mm [INCHES]		CHK J.D.WEARY 9/3/92	HDI, GUIDE PIN	
TOLERANCES UNLESS OTHERWISE SPECIFIED:		APVD -	-	
0 PLC ± -		PRODUCT SPEC	-	
1 PLC ± -		APPLICATION SPEC	-	
2 PLC ± -		WEIGHT	-	
3 PLC ± 0.13 [.005]		SCALE	8:1	
4 PLC ± -		SIZE	A2	
ANGLES ± -		CAGE CODE	00779	
MATERIAL	FINISH	DRAWING NO	C=532807	
1	2	RESTRICTED TO	-	
CUSTOMER DRAWING			SHEET	1 of 1
			REV	D3